

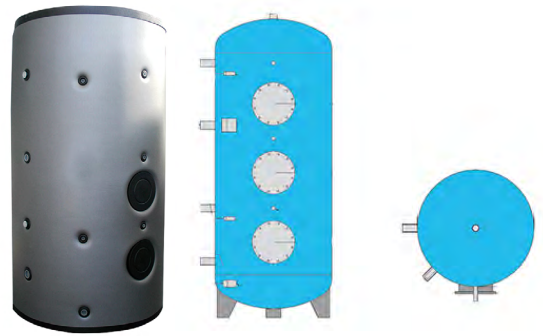
WATER HEATERS AND PUFFERS

WATER HEATERS AND ACCESSORIES

BSE

200 L to 2000 L DHW water heater removable coil

Combined carbon steel water heater with 1 or 3 inspection flanges for inspection \varnothing 290/220 mm with anode protection and internal vitrification treatment according to DIN 4753-3 and UNI 10025. Polyester fibre insulation thick. 100mm and PVC exterior finish. Ready for installation of removable coils (optional).



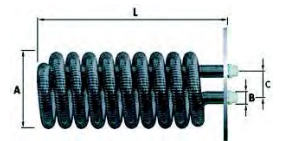
MODEL		BSE200S1	BSE300S1	BSE500S1	BSE800S1	BSE1000S1	BSE1500S1	BSE2000S1	
Useful volume	L	208	285	749	749	955	1450	1990	
Energy class/dissipation		C 77W	C 95W	C 130W	C 130W	C 142W	C 162W	C 186W	
Tot. ht. with ins.	mm	1275	1675	1875	1875	2205	2185	2470	
Max. height straightening	mm	1275	1660	1920	1920	2200	2200	2520	
Water heater polyester fibre ins. 100mm	\varnothing mm	700	700	990	990	990	1200	1300	
Flange	\varnothing mm	290/220							
Unladen weight	kg	70	91	135	190	207	321	405	
Maximum pressure	bar	10						8	
Max. water heat. op. temp.	$^{\circ}$ C	95							
CODE		00014BSE01	00014BSE03	00014BSE05	00014BSE07	00014BSE10	00014BSE13	00014BSE16	

MODEL		BSE800S3	BSE1000S3	BSE1500S3	BSE2000S3
Useful volume	L	749	955	1450	1990
Energy class/dissipation		C 130W	C 142W	C 162W	C 186W
Tot. ht. with ins.	mm	1875	2205	2185	2470
Max. height straightening	mm	1920	2200	2200	2520
Water heater polyester fibre ins. 100mm	\varnothing mm	990	990	1200	1300
Flange	\varnothing mm	290/220			
Unladen weight	kg	190	207	321	405
Maximum pressure	bar	10		8	
Max. water heat. op. temp.	$^{\circ}$ C	95			
CODE		00014BSE09	00014BSE12	00014BSE15	00014BSE18

SE removable coil

Removable coil KIT for BSE finned copper water heater with perforated flange, copper coil, flange cover and nuts and bolts.

N.B. The length of the coil must be at least 10 cm shorter than the diameter of the heater.



MODEL		SE121	SE180	SE263	SE320	SE454	SE634
Exchanger surface area	m ²	1.21	1.80	2.36	3.20	4.54	6.43
Exchanger water cap.	l	0.7	1.4	2.0	2.5	3.5	5.0
Power consumption	kW	24	36	53	64	91	127
Req. flow rate to coil	m ³ /h	1.0	1.6	2.3	2.8	3.9	5.5
Domestic water prod. 80 $^{\circ}$ /60 $^{\circ}$ C (DIN 4708)	m ³ /h	0.6	0.9	1.3	1.6	2.2	3.1
Pressure drops	mbar	387	245	748	1303	745	1930
Coefficient (DIN 4708)	NL	3	5	13	16	30	42
	kW	36	43	62	75	108	150
	A	DN 200					
	B	3/4"				1"	
	C mm	80					
	L mm	420	470	580	660	750	980
	kg	11.0	13.4	16.4	18.4	23.4	30.0
CODE		00014SER01	00014SER02	00014SER03	00014SER04	00014SER05	00014SER06