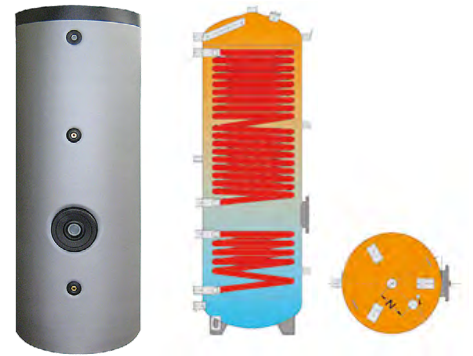


WATER HEATERS AND PUFFERS

BSM

DHW water heater from heat pump and solar panels from 300 L to 500 L

Twin-coil carbon steel water heater with anode protection and internal vitrification treatment according to DIN 4753-3 and UNI 10025. Rigid polyurethane insulation thick. 50mm and PVC exterior finish.



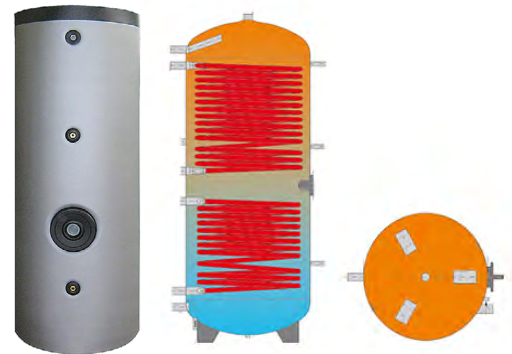
MODEL		BSM300	BSM500
Useful volume	LT	260	455
Energy class/dissipation		C 85W	C 112W
OPERATING PRESSURE			
Upper and lower coil	bar	10	10
Domestic	bar	10	10
MAXIMUM TEMPERATURES			
Upper and lower coil	°C	110	110
Domestic	°C	95	95
DIMENSIONS AND WEIGHTS			
Diameter with thermal insulation	Ø mm	600	740
Diameter with no thermal insulation	Ø mm	500	650
Total height	mm	1615	1705
Unladen weight	kg	131	182
Flange	Ø mm	180/120	
UPPER COIL			
Coil surface area	m ²	3.7	5.2
Coil water content	l	18	31
Heating water 60°C/50°C	m ³ /h	1.59	2.37
Power output	kW	29	44
Domestic prod. 10°C/45°C-DIN 4708	m ³ /h	0.71	1.08
Pressure drop	mbar	17	21
LOWER COIL			
Coil surface area	m ²	1.2	1.8
Coil water content	l	8	10
Heating water 80°C/60°C	m ³ /h	1.25	1.9
Power output	kW	18.5	27.5
Domestic prod. 10°C/45°C-DIN 4708	m ³ /h	0.45	0.68
Pressure drop	mbar	31	37
SERIES COILS			
Coil surface area	m ²	4.9	7.0
Coil water content	l	26	41
Heating water 60°C/50°C	m ³ /h	2.32	3.27
Power output	kW	27	38
Domestic prod. 10°C/45°C-DIN 4708	m ³ /h	0.66	0.93
Pressure drop	mbar	63	67
CODE		00014BSM03	00014BSM05

WATER HEATERS AND ACCESSORIES

BSM

DHW water heater from heat pump and solar panels from 800 L to 2000 L

Twin-coil carbon steel water heater with anode protection and internal vitrification treatment according to DIN 4753-3 and UNI 10025. Polyester fibre insulation thick, 100mm and PVC exterior finish.



MODEL		BSM800	BSM1000	BSM1500	BSM2000
Useful volume	LT	702	900	1390	1900
Energy class/dissipation		C 130W	C 142W	C 162W	C 186W
OPERATING PRESSURE					
Upper and lower coil	bar	10	10	10	10
Domestic	bar	10	10	8	8
MAXIMUM TEMPERATURES					
Upper and lower coil	°C	110	110	110	110
Domestic	°C	95	95	95	95
DIMENSIONS AND WEIGHTS					
Diameter with thermal insulation	Ø mm	990	990	1200	1300
Diameter with no thermal insulation	Ø mm	790	790	1000	1100
Total height	mm	1875	2205	2185	2470
Unladen weight	kg	265	294	395	601
Flange	Ø mm	180/200		290/220	
UPPER COIL					
Coil surface area	m ²	5.2	6.0	6.0	12.0
Coil water content	l	31	35	35	68
Heating water 60°C/50°C	m ³ /h	2.58	3.01	3.01	6.02
Power output	kW	30	88	88	103
Domestic prod. 10°C/45°C-DIN 4708	m ³ /h	1.47	2.21	2.21	2.5
Pressure drop	mbar	93	215	215	340
LOWER COIL					
Coil surface area	m ²	2.4	3.7	3.7	4.3
Coil water content	l	14	23	23	26
Heating water 80°C/60°C	m ³ /h	2.6	3.8	3.8	4.4
Power output	kW	30.0	35.0	35.0	70.0
Domestic prod. 10°C/45°C-DIN 4708	m ³ /h	0.74	0.86	0.86	1.72
Pressure drop	mbar	40	45	45	90
SERIES COILS					
Coil surface area	m ²	7.6	9.7	9.7	16.3
Coil water content	l	45	58	58	94
Heating water 60°C/50°C	m ³ /h	3.53	4.56	4.56	7.70
Power output	kW	41	53	53	89
Domestic prod. 10°C/45°C-DIN 4708	m ³ /h	1.01	1.30	1.30	7.20
Pressure drop	mbar	150	195	195	330
CODE		00014BSM06	00014BSM07	00014BSM08	00014BSM09