

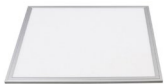
LED LIGHTING TECHNOLOGY

LED LIGHTING TECHNOLOGY

ECA Technology Lighting System is a **range of LED products** for the lighting of commercial and industrial environments with high quality standards able to meet the needs of any new building or building to be renovated.

Refurbish rooms by opting for lighting that enhances and improves spaces using **relamping** has been gaining ground and becoming a priority. ECA Technology Lighting System products address this requirement by providing the right lighting design that not only creates a comfortable working environment throughout the day, but also significantly reduces energy and maintenance costs in the company.

Relamping research and the design of LED systems using ECA Technology Lighting System products are suitable activities for: Industrial production areas; Shops, supermarkets, offices; Healthcare facilities; Hotels, restaurants, bars and accommodation; Public spaces and outdoors.



Panel light

SQUARE AND RECTANGULAR



LED tubes

G SERIES



Ceiling lights

WATERPROOF, RECESSED, AND LED TUBE CEILING LIGHTS



Bell lights

SERIE P5



Outdoor lights

P SERIES, CLA SERIES



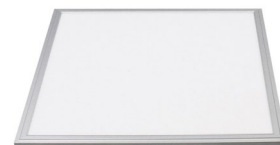
Streetlights

CLP SERIES LED STREETLIGHTS

Panel Light e Tubes

Panel light

Ideal for offices, shops, hallways, public buildings, schools.



MODEL	PANEL LIGHT 600	PANEL LIGHT 1200
Power supply	230 VAC/1ph/50Hz*	230 VAC/1ph/50Hz*
Power consumption	40W /54W	40W /54W
Colour temperature	4000K-6000K	4000K-6000K
Luminous flux	3400-4590 lm	3400-4590 lm
Beam angle	120°	120°
CRI	>80 Ra	>80 Ra
Dimmable	yes (optional)	yes (optional)
Dimensions	595 x 595 x 11.5 h mm	1195 x 295 x 11.5 h mm
Operating temperature	-20°C - 40°C	-20°C - 40°C
Level of protection	IP20	IP20
Insulation class	II	II

*with external power supply

Tubes

Ideal for offices, shops, supermarkets, hallways, public buildings, schools, garages.



MODEL	TUBI T8AS	TUBI T8LS
Power supply	200-240VAC/1ph/50-60Hz*	200-240VAC/1ph/50-60Hz*
Power consumption	10W / 20W / 24W	25W / 30W
Colour temperature	4000-4500K - 5500-6500K	3000-3500K - 4000-4500K - 5500-6500K
Luminous flux	1050-1100 lm / 2100-2200 lm / 2400-2500 lm	2550-2700 lm / 2500-2700 lm / 3050-3300 lm
Beam angle	180°	180°
CRI	>80 Ra	>78 Ra
Dimmable	no	no
Dimensions	ø 26 mm L: 603/1211/1511 mm	ø 26 mm L: 1211/1511 mm
Weight	0.28 kg / 0.46 kg / 0.52 kg	0.46 kg / 0.52 kg
Operating temperature	-20°C - 40°C	-20°C - 40°C
Level of protection	IP20	IP20
Insulation class	II	II
Energy class	A +	A +

*with external power supply

Ceiling lights

Waterproof ceiling lights

Ideal for warehouses, production sites, public buildings, garages, sports facilities.



MODEL	WATERPROOF TUBULAR CEILING LIGHTS
Power supply	200-240VAC/1ph/50-60Hz
Connection	G13
Tube type	T8 L: 600 / 1200 / 1500 mm
No. of Tubes	1 - 2
Dimensions No. 1 Tube	662x95x111h mm / 1272x95x111h mm / 1572x95x111h mm
Weight	1.38kg / 2.04kg / 2.80kg
Dimensions No. 2 Tube	662x145x111h mm / 1272x145x111h mm / 1572x145x111h mm
Weight	1.70kg / 3.20kg / 4.20kg
Operating temperature	-25°C - 40°C
Level of protection	IP66 - IK08
Insulation class	I

Recessed ceiling lights

Ideal for offices, shops, hallways, public buildings, schools.



MODEL	RECESSED CEILING LIGHTS
Power supply	200-240VAC/1ph/50-60Hz
Connection	G13
Tube type	T8 L: 600
No. of Tubes	4
Dimensions (WxDxH)	595x595x90 mm
Weight	4.56 kg
Operating temperature	-25°C - 40°C
Level of protection	IP20
Insulation class	I

LED Ceiling Lights

Ideal for offices, shops, hallways, public buildings, schools



MODEL	CEILING LIGHT 662mm	CEILING LIGHT 1272mm	CEILING LIGHT 1572mm
Power supply	220/240V/60Hz	220/240V/60Hz	220/240V/60Hz
Power consumption	12W / 24W	24W / 48W	30W / 60W
Colour temperature	4000K	4000K	4000K
Luminous flux	1700 lm / 3400 lm	3400 lm / 6800 lm	4250 lm / 8500 lm
Beam angle	120°	120°	120°
CRI	>80 Ra	>80 Ra	>80 Ra
Dimmable	on request	on request	on request
Dimensions (WxHxD)	662x95x111 / 662x145x111	1272x95x111 / 1272x145x111	1572x95x111 / 1572x145x111
Weight	1.02 kg / 1.24 kg	1.68 kg / 2.17 kg	2.00 kg / 2.58 kg
Operating temperature	-20°C - 40°C	-20°C - 40°C	-20°C - 40°C
Level of protection	IP66	IP66	IP66
Insulation class	II	II	II

Bell and outdoor lights

Bell lights

Ideal for warehouses, production sites, shops.

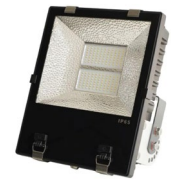


MODEL	BELL 50 - 100	BELL 150 - 200
Power supply	230 VAC/1ph/50Hz*	230 VAC/1ph/50Hz*
Power consumption	50W /100W	150W /200W
Colour temperature	4000K-4500K / 5000-6500K	4000K-4500K / 5000-6500K
Luminous flux	4600 lm - 4750 lm / 8900 lm - 9200 lm	13800 lm - 14250 lm / 17800 lm -18400 lm
Beam angle	45° / 90°	30° / 100°
CRI	≥ 70 Ra	≥ 70 Ra
Dimmable	no	no
Dimensions	ø160x275h mm / ø160x325h mm	ø240x310h mm / ø240x335h mm
Weight	3.3kg / 4.4kg	5.5kg / 6.6kg
Operating temperature	-40°C - 45°C	-40°C - 45°C
Level of protection	IP54	IP54
Insulation class	I	I

*with external power supply

Outdoor lights

Ideal for architectural lighting, art lighting.



MODEL	FARI 50 - 70	FARI 100 - 150 - 200
Power supply	230 VAC/1ph/50Hz*	230 VAC/1ph/50Hz*
Power consumption	50W /70W	100W / 150W / 200W
Colour temperature	4000-4500K / 5000-6500K	4000-4500K / 5000-6500K
Luminous flux	4450 lm - 4700 lm / 5800 lm - 6100 lm	7450 lm - 7850 lm / 12700 lm -13400 lm / 17000 lm - 17900 lm
Beam angle	105°	105°
CRI	≥ 70 Ra	≥ 70 Ra
Dimmable	no	no
Dimensions (WxDxH)	200x98x253mm / 250x122x291 mm	250x192x309 mm / 310x187x375mm / 340x192x400mm
Weight	1.60 kg / 3.10 kg	4.30kg / 6.80kg / 8.34kg
Operating temperature	-30°C - 50°C	-30°C - 50°C
Level of protection	IP65	IP65
Insulation class	I	I

*with external power supply

Outdoor floodlights and street lighting

CLA outdoor floodlights

Ideal for architectural lighting, art lighting.



MODEL	AS: ASYMMETRICAL LENS	SM: NO LENS
Power supply	230 VAC/1ph/50Hz*	230 VAC/1ph/50Hz*
Power consumption	128W / 160W / 192W / 224W / 256W / 288W / 320W	128W / 160W / 192W / 224W / 256W / 288W / 320W
Colour temperature	4000K	4000K
Luminous flux	16600 lm / 2080 lm / 24900 lm / 29100 lm / 33300 lm / 37450 lm / 41600 lm	17200 lm / 21500 lm / 25800 lm / 30100 lm / 34400 lm / 38700 lm / 43000 lm
Beam angle	50°	120°
CRI	≥ 70 Ra	≥ 70 Ra
Dimmable	no	no
Dimensions (WxDxH)	630x150x590 mm	630x150x590 mm
Weight	min 20 kg - max 22 kg	min 20 kg - max 22 kg
Operating temperature	-30°C - 50°C	-30°C - 50°C
Level of protection	IP66	IP66
Insulation class	II	II

Street lighting

Ideal for street lighting, car parks and parks.



MODEL	CEILING LIGHT 662mm	CEILING LIGHT 1272mm	CEILING LIGHT 1572mm
Power supply	220/240V/60Hz	220/240V/60Hz	220/240V/60Hz
Power consumption	34W / 67W / 100W / 134 W	34W / 67W / 100W / 134 W	34W / 67W / 100W / 134 W
Colour temperature	4000K	4000K	4000K
Luminous flux	4160 lm / 8320 lm / 12480 lm / 16640 lm	4160 lm / 8320 lm / 12480 lm / 16640 lm	4160 lm / 8320 lm / 12480 lm / 16640 lm
Beam angle	50°	30°	/
CRI	≥70 Ra	>70 Ra	>70 Ra
Dimensions (WxDxH)	283x97x450 mm	283x97x450 mm	283x97x450 mm
Weight	6.35kg / 6.61kg / 6.62 kg	6.35kg / 6.61kg / 6.62 kg	6.35kg / 6.61kg / 6.62 kg
Operating temperature	-30°C - 50°C	-30°C - 50°C	-30°C - 50°C
Level of protection	IP66	IP66	IP66
Insulation class	II	II	II

Anniversary
1981 - 2021

ECA Technology

ENERGY AND AIR-CONDITIONING SOLUTIONS

ECA TECHNOLOGY SRL
Via dell'Industria 51, 36040 Grisignano di Zocco (VI)
Tel 0444 418388 eca @ecatech.it www.ecatech.it