

## The **advantages** of proper **ventilation**

A controlled mechanical ventilation system with heat recovery is a system designed for the **continuous air exchange** in the home and in all indoor environments in general that allows stale air to be replaced and substituted with fresh, oxygen-rich outside air.

The choice of integrating a ventilation system into a building makes it possible to ensure proper exchange of air in closed rooms in all situations where it cannot be managed by opening windows. This is essential in promoting the evacuation of pollutants that accumulate in indoor spaces by ensuring **greater comfort** and **health** at home or in office spaces.

Mechanical ventilation is also essential in all modern homes or buildings with high energy efficiency and a high percentage of insulation for the prevention of issues regarding humidity and mould.

The most advanced VMC systems include a **heat recovery** system: the thermal energy of the outgoing air that has been heated or cooled is retained in the exchanger and then transferred to the incoming air, which will therefore be warmer in winter and cooler in summer than the outdoor air.

### I Plus

- Continuous, uniform temperature management;
- Control of the percentage of humidity in rooms;
- Advanced air filtering;
- Containment of external noise;
- Reduction of energy loss to a minimum.



## HFRM - Vertical wall units

**Air renewal units** for residential application in the HFRM series feature very high heat recovery efficiency, light weight and compactness, and easy, trouble-free installation.

Heat recovery, which takes place using a device made entirely of polystyrene, makes it practically unnecessary to use post-handling systems for replacement air. They can be supplied in combination with an air ionisation system, which is used to sanitise and deodorise air and the surfaces of the machine, ducting and neighbouring rooms.

- Compliant with ERP 2016-2018,
- Low consumption EC fans,
- Integrated by-pass system,
- Compact and ultra lightweight,
- F7 return filtering,
- G4 expulsion filtration.

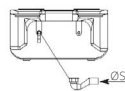
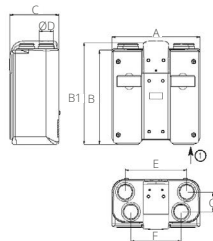


HFRM heat recovery unit

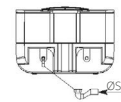
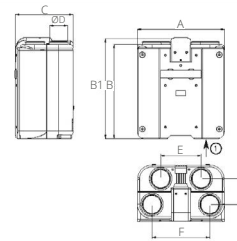
MODEL		HFRM15	HFRM25	HFRM35	HFRM50	HFRM60
Power supply	V/Ph/Hz	230/1/50				
Maximum nominal air flow volume 100Pa	m³/h	152	250	352	500	610
Nominal static air flow	Pa	300	100	280	100	100
Dimensions	mm	700x800x390	700x800x390	905x1030x600	905x1030x600	905x1030x600
Weight	kg	15	18	28	30	35
Sound pressure level <sup>(1)</sup>	dB (A)	49	52	54	55	55
Outdoor temperature/humidity limits	°C	-5...+45/5...95%				
Indoor temperature/humidity limits	°C	+10...+35/10...90%				
<b>FANS</b>						
Total nominal current consumption	A	0.60	1.30	1.30	1.70	1.30
Total nominal power consumption	W	64	58	58	86	153
Max. electric power consumption	W	136	136	196	196	340
Maximum total current consumption	A	1.30	1.30	1.70	1.70	3.40
<b>WINTER OPERATION HEAT RECOVERY UNIT</b>						
Heating efficiency <sup>(1)</sup>	%	87.2	87.0	85.7	88.2	84.8
Air delivery temperature <sup>(1)</sup>	°C	17.0	22.0	16.4	17.0	16.2
<b>SUMMER OPERATION HEAT RECOVERY UNIT</b>						
Heating efficiency <sup>(2)</sup>	%	82.4	79.9	80.4	81.0	79.2
Air delivery temperature <sup>(2)</sup>	°C	27.1	27.2	27.2	27.1	27.2
<b>CODE</b>		<b>0006451</b>	<b>0006452</b>	<b>0006453</b>	<b>0006454</b>	<b>0006455</b>

(1) Outdoor air -5°C 80% RH; room air 20°C 50% RH

(2) Outdoor air 32°C 50% RH; room air 26°C 50% RH



HFRM 15 - 25



HFRM 35 - 60

MODEL DIMENSIONS		HFRM15	HFRM25	HFRM35	HFRM50	HFRM60
A	mm	700	700	905	905	905
B	mm	740	740	970	970	970
B1	mm	800	800	1030	1030	1030
C	mm	390	390	600	600	600
E	mm	490	490	418	418	418
F	mm	400	400	600	600	600
G	mm	155	155	265	265	265
ØD	mm	125	125	200	200	200
ØS	mm	20				

## Accessories - HFR and HFRM



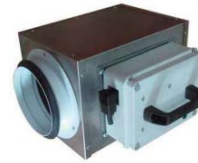
PCUS/PCUSM



BW1-BW2



BHC



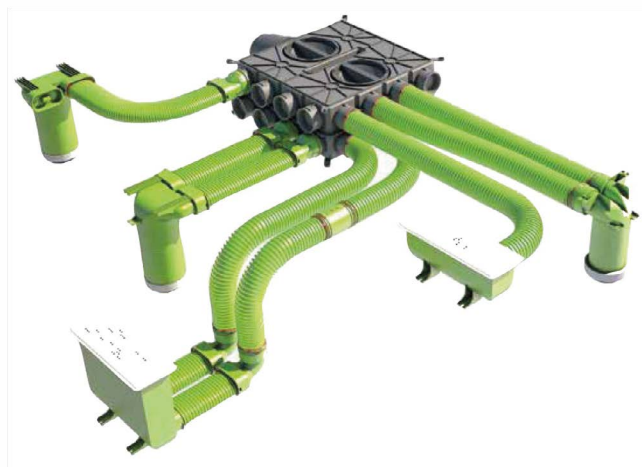
ION



USW

MODEL	Abb.
Electrical Pre-heat.	BE1
Electric Post-Heat.	BE2
Water Pre-heat. coil	BW1
	BW2
Water Post-cool.-heat. coil	BHC
2-way valve kit ON-OFF	V20
3-way valve kit MODULATING	V3M
Filter and PM1 70%	F7CF
ADJUSTMENT ACCESSORIES	
PCUS control panel	PCUS
PCUSM (modbus) control panel	PCUSM
4-button radio freq. panel	TS4
Antenna	ANT
Wall-mounted control panel	WUI
Wall-mounted CO2 probe	QSW
Wall-mounted humidity probe	USW
Ethernet network bridge	BDG
Ionizer Module	Ion

## Air distribution accessories - HFR, HFRM and HRH



Air distribution systems for controlled mechanical ventilation are available on request.