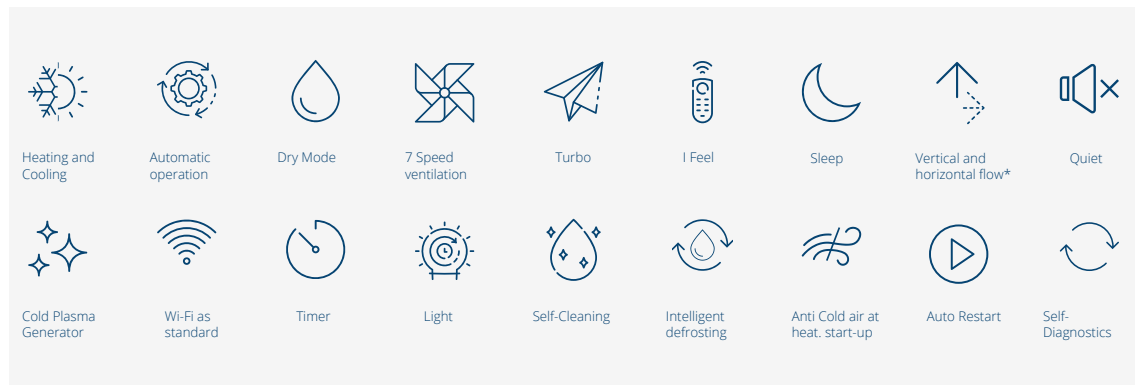


## MULTISPLIT SOLUTIONS

# FeelPlus+ Multi-Wall and Multi-Console



\*Double delivery vertical flow in FEVM console version



FPVM Wall



FEVM Floor

## TECHNICAL DATA

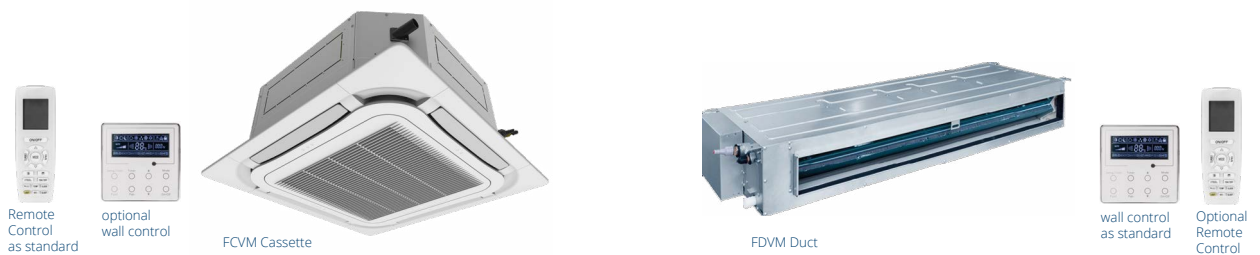
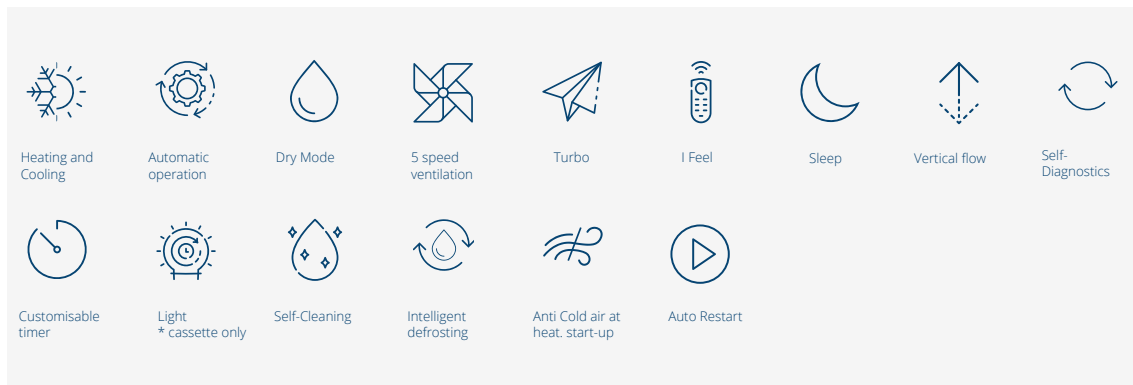
MODEL	WALL FPVM				FLOOR FEVM				
	I.U.	0918HE32	1218HE32	1818HE32	2418HE32	0919HE32	1219HE32	1819HE32	
Power supply	V/Ph/Hz	230/1/50				230/1/50			
Nominal cooling capacity	kW	2.70	3.50	5.30	7.00	2.70	3.52	5.20	
	BTU/h	9200	12000	18084	24000	9212	12010	17742	
Nominal heating capacity	kW	2.93	3.81	5.57	7.20	2.9	3.8	5.33	
	BTU/h	10000	13000	19005	24500	9895	12966	18186	
Air flow volume (SH/H/MH/M/ML/L/SL)	m³/h	660/590/540/490/450/420/390	680/590/540/490/450/420/390	850/750/-/610/-/520/-	1250/1100/1000/950/900/850/750	500/430/410/370/330/280/250	600/520/480/440/400/360/280	700/650/580/520/460/410/320	
Sound pressure (SH/H/MH/M/ML/L/SL)	dB(A)	41/39/37/35/33/31/24	43/39/37/35/34/32/25	49/45/43/41/39/37/34	49/47/44/42/40/38/36	39/36/33/31/29/26/23	44/40/38/36/33/29/25	47/45/43/41/38/37/32	
Sound power (SH/H/MH/M/ML/L/SL)	dB(A)	56/53/52/50/48/46/39	58/53/52/50/48/46/40	58/55/53/51/49/47/44	65/61/58/56/54/52/50	50/48/45/44/42/38/34	54/50/48/46/43/39/35	57/55/53/51/48/47/42	
Dimensions (H x W x D)	mm	290x865x210	290x865x210	301x996x225	327x1101x249	600x700x215	600x700x215	600x700x215	
Net weight	kg	10.5	11	13.5	16.5	15.5	15.5	15.5	
Liquid / gas pipe diameter	mm (inch")	6.35 (1/4") / 9.52 (3/8")	6.35 (1/4") / 9.52 (3/8")	6.35 (1/4") / 12.7 (1/2")	6.35 (1/4") / 15.8 (5/8")	6.35 (1/4") / 9.52 (3/8")	6.35 (1/4") / 9.52 (3/8")	6.35 (1/4") / 12.7 (1/2")	
CODE		2702040	2702041	2702042	2702043	2702441	2702443	2702444	

OPTIONAL ACCESSORIES	CODE
Wired controller for control of up to 36 indoor units*	2701456
ON-OFF remote control kit**	2402050
Wall control with Weekly Timer	2704040

\* Each indoor unit must be equipped with a wired controller Cod. 2704040 - \*\*for FPVM wall split only

## MULTISPLIT SOLUTIONS

# FeelPlus+Multi Cassette and Multi Ducted



## TECHNICAL DATA

MODEL	I.U.	CASSETTE FCVM		DUCTED FDVM	
		1222HE32	1822HE32	1218HE32	1818HE32
Power supply	V/Ph/Hz	230/1/50			
Nominal cooling capacity	kW	3,50	5,00	3.50	5.00
	BTU/h	11900	17100	11942	17060
Nominal heating capacity	kW	4,00	5,50	3.85	5.5
	BTU/h	13600	18800	13150	18800
Air flow volume (smax/max/med/min)	m³/h	560/540/490/450/420/380/350	650/540/490/450/420/380/350	620/550/400/300	840/700/600/500
Sound pressure (smax/max/med/min)	dB(A)	"Raffr:41/39/36/34/32/30/28 Risc:40/38/36/34/32/30/28"		42/39/35/32	45/41/37/33
Sound power (smax/max/med/min)	dB(A)	57/55/52/50/48/46/44	59/55/52/50/48/46/44	52/49/45/42	55/51/47/43
Dimensions (H x W x D)	mm	265x570x570	265x570x570	200x700x615	200x900x615
Net weight	kg	17	17	22	26
Liquid / gas pipe diameter	mm (inch")	6,35 (1/4") / 9,52 (3/8")	6,35 (1/4") / 12,7 (1/2")	6.35 (1/4") / 9.52 (3/8")	6.35 (1/4") / 12.7 (1/2")
Grille dimensions (HxWxD)	mm	47,5x620x620	47,5x620x620		
Grille recess hole	mm	580x580	580x580		
Grille weight	kg	3	3		
CODE		2702346 - 2702500	2702347 - 2702500	2702241	2702242

OPTIONAL ACCESSORIES	CODE
Comando a parete con Timer Settimanale	2704040
Remote on-off contact card	2402050
Wired controller for control of up to 36 indoor units*	2701456
Comando a parete con WiFi integrato per cassetta FCVM	2702501
Circular nozzle section with 2 outlets ø 160mm for FDVM 1222	2701930
Circular nozzle section with 3 outlets ø 125mm for FDVM 1222	2701931
Circular nozzle section with 2 outlets ø 200mm for FDVM 1822	2701935
Circular nozzle section with 3 outlets ø 160mm for FDVM 1822	2701937
Circular nozzle section with 4 outlets ø 160mm for FDVM 1822	2701938

\* Each indoor unit must be equipped with a wired controller Cod. 2704040

## Multisplit **Possible Combinations**

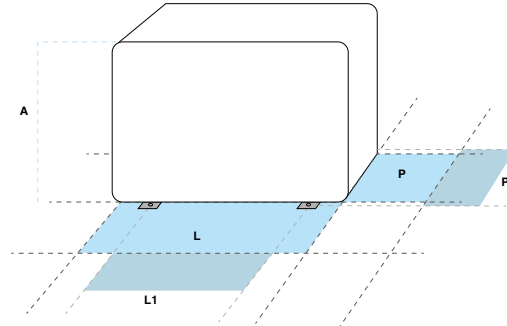


	FMVD2022HE32	FMVDT2422HE32	FMVDT2822HE32	FMVTQ3422HE32	FMVQP4422HE32
<b>2 indoor units</b>	9 + 9	9 + 9	9 + 9	9 + 9	-
	9 + 12	9 + 12	9 + 12	9 + 12	9 + 12
	-	12 + 12	9 + 18	9 + 18	9 + 18
	-	-	12 + 12	12 + 12	9 + 24
	-	-	12 + 18	12 + 18	12 + 12
	-	-	-	18 + 18	12 + 18
	-	-	-	-	12 + 24
	-	-	-	-	18 + 18
	-	-	-	-	18 + 24
<b>3 indoor units</b>	-	9 + 9 + 9	9 + 9 + 9	9 + 9 + 9	9 + 9 + 9
	-	-	9 + 9 + 12	9 + 9 + 12	9 + 9 + 12
	-	-	-	9 + 9 + 18	9 + 9 + 18
	-	-	-	9 + 12 + 12	9 + 9 + 24
	-	-	-	12 + 12 + 12	9 + 12 + 12
	-	-	-	-	9 + 12 + 18
	-	-	-	-	9 + 12 + 24
	-	-	-	-	9 + 18 + 18
	-	-	-	-	9 + 18 + 24
	-	-	-	-	12 + 12 + 12
	-	-	-	-	12 + 12 + 18
	-	-	-	-	12 + 12 + 24
-	-	-	-	12 + 18 + 18	
<b>4 indoor units</b>	-	-	-	9 + 9 + 9 + 9	9 + 9 + 9 + 9
	-	-	-	9 + 9 + 9 + 12	9 + 9 + 9 + 12
	-	-	-	-	9 + 9 + 9 + 18
	-	-	-	-	9 + 9 + 9 + 24
	-	-	-	-	9 + 9 + 12 + 12
	-	-	-	-	9 + 9 + 12 + 18
	-	-	-	-	9 + 12 + 12 + 12
	-	-	-	-	9 + 12 + 12 + 18
-	-	-	-	12 + 12 + 12 + 12	
<b>5 indoor units</b>	-	-	-	-	9 + 9 + 9 + 9 + 9
	-	-	-	-	9 + 9 + 9 + 9 + 12
	-	-	-	-	9 + 9 + 9 + 12 + 12

## Multisplit external unit



FMVD2022HE32



Per riferimento dati DIMENSIONI (AxLxP) e INTERASSI (L1 e P1) visualizzare la tabella sottostante

MODEL	U.E.	FMVD2022HE32	FMVDT2422HE32	FMVDT2822HE32	FMVTQ3422HE32	FMVQP4422HE32
Number of connections for indoor units		2	3	3	4	5
Power supply	V/f/Hz	230/1/50				
Nominal cooling capacity (min-max)	kW	5,30 (2,14÷5,80)	6,10 (2,20÷8,30)	7,10 (2,30÷9,20)	8,00 (2,30÷11,00)	12,10 (2,60÷15,20)
	BTU/h	18100 (7300÷19800)	20800 (7500÷28300)	24200 (7850÷32400)	28000 (7800÷37500)	41300 (8900÷51900)
Nominal cooling electric power	kW	1,48	1,48	1,88	2,12	3,40
Nominal heating capacity (min-max)	kW	5,65 (2,58÷6,50)	6,50 (3,60÷8,50)	8,60 (3,65÷9,20)	9,50 (3,65÷10,25)	13,00 (3,00÷15,50)
	BTU/h	19300 (8800÷22200)	22200 (12300÷29000)	29300 (12500÷30000)	32400 (12500÷35000)	44400 (10200÷52900)
Nominal heating electric power	kW	1,25	1,43	2,23	2,20	3,19
EER / COP		3,58 / 4,53	4,12 / 4,56	3,77 / 3,86	3,77 / 4,31	3,56 / 4,08
Air flow volume	m <sup>3</sup> /h	2300	3800	3800	3800	5800
Sound pressure / Sound power	dB(A)	54 / 64	58 / 68	58 / 68	58 / 68	60 / 74
Outdoor unit dimensions (HxWxD)	mm	550x745x300	654x889x340	654x889x340	654x889x340	1020x826x427
Leg spacing W1 x D1	mm	512 x 332	570 x 371	570 x 371	570 x 371	635 x 396
Outdoor unit net weight	kg	32	47,5	47,5	51	73
Pipe length: max with standard/total charge with additional charge/single pipe with additional charge	m	10/40/20	30/60/20	30/60/20	40/70/20	50/100/25
Refrigerant addition beyond max length with standard charge	gr/m	20	20	20	20	20
Max height difference	m	15	15	15	15	25
Liquid/gas pipe diameter	mm (inch")	6,35 (1/4") / 9,52 (3/8")	6,35 (1/4") / 9,52 (3/8")	6,35 (1/4") / 9,52 (3/8")	6,35 (1/4") / 9,52 (3/8")	6,35 (1/4") / 9,52 (3/8")
Refrigerant type/standard charge	tipo/kg	R32 / 0,90	R32 / 1,60	R32 / 1,70	R32 / 1,80	R32 / 2,40
Global warming potential / CO2 equiv. tons	GWP/tons	675 / 0,607	675 / 1,080	675 / 1,147	675 / 1,215	675 / 1,620
Heating/cooling ambient operating temp. range.	°C	-22÷24 / -15÷43				
CODE		2702551	2702552	2702553	2702554	2702555

Outdoor units FMVD2022HE32, FMVDT2422HE32, FMVDT2822HE32, FMVDT3422HE32, FMVDT4422HE32 compatible with all FeelPlus+ (FPVM), Syntek Shine (SKWI), FeelPlus console (FEVM), cassette (FCVM), ducted (FDVM) multi wall indoor units as per the possible combinations shown on page 41.



\*The width measurement does not include the tap cover.

The technical data above refers to the European standards EN14511 and EN14825.  
THE OUTDOOR UNITS CONTAIN FLUORINATED GREENHOUSE GASES REGULATED BY THE KYOTO PROTOCOL

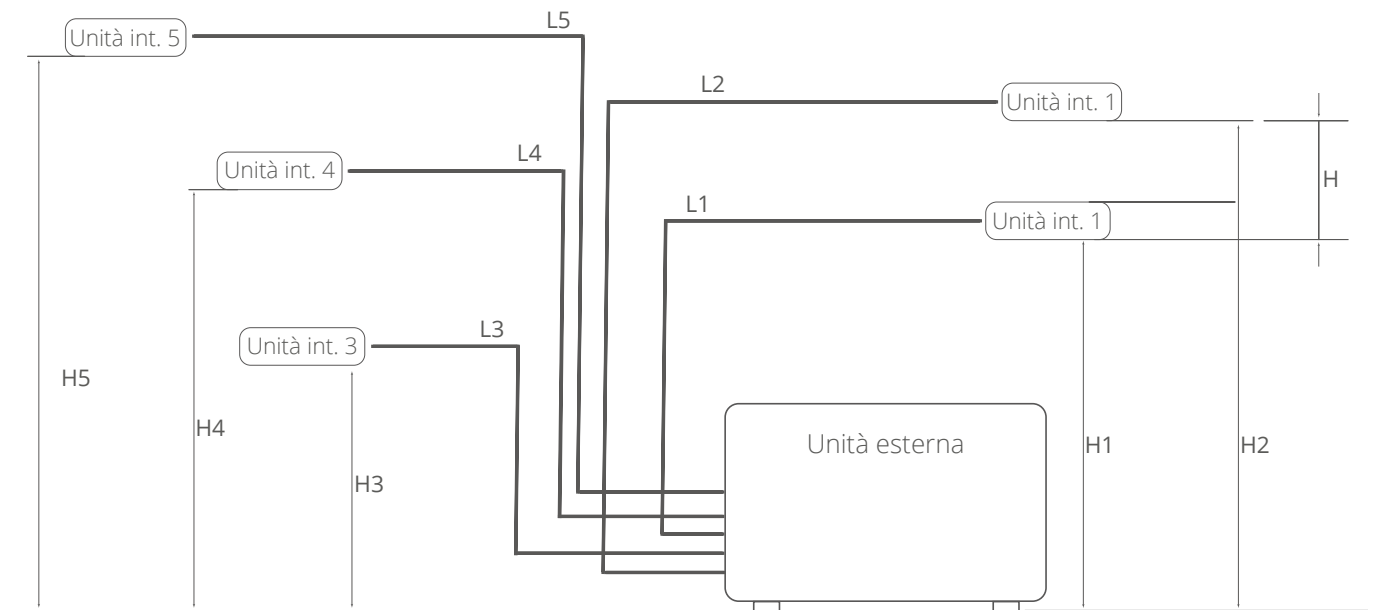
## CONNECTION OF REFRIGERATION PIPES

### Limits on **length** and **height difference** of refrigerant pipes

The length of the refrigerant pipes between the indoor and outdoor unit must be as short as possible and is limited by compliance with the maximum height difference between the units.

When installing the refrigerant pipes, both the length (L) and the height difference (H) must be minimised.

A minimum length of 2 metres per line is recommended.



### QUANTITY OF REFRIGERANT

The following table shows the splitting and loading data. A minimum length of 2 metres per line is recommended.

OUTDOOR UNIT MODEL		FMVD 2022	FMVDT 2422	FMVDT 2822	FMVTQ 3422	FMVQP 4422
Refrigerant charge on shipment	kg	0,9	1,6	1,7	1,8	2,4
Liquid pipe diameter	mm / (inch")	6,35 - 1/4"				
Gas pipe diameter	mm / (inch"	9,52 - 3/8"				
Maximum pipe length with standard refrigerant charge	m	10	30	30	40	50
Additional quantity of refrigerant	g/m	20	20	20	20	20
Maximum total pipe length $L = L1 + L2 + L3 + L4 + L5$	m	40	60	60	70	100
Maximum single pipe length L1, L2, L3, L4, L5	m	20	20	20	20	25
Maximum height difference H1, H2, H3, H4, H5 with outdoor unit above indoor unit	m	15	15	15	15	25
Maximum height difference H1, H2, H3, H4, H5 with outdoor unit below indoor unit	m	15	15	15	15	25
Maximum height difference (H) between the various indoor units	m	15	15	15	15	25

N.B. additional compressor oil charge not required.

# Efficiencies and Cooling and Heating Combinations

FMVD2022HE32	Internal Unit			Rated Capacity(KW)			Total Cooling Capacity kW			Total Power Input(KW)			Total Current(A)230V			SEER(W/W)		Energy Label	
	A	B	C	1 unità	2 unità	3 unità	Min.	Rated.	Max.	Min.	Rated.	Max.	Min.	Rated.	Max.	Feel+	Shine	Feel+	Shine
	9			2,60			2,15	2,60	3,00	0,30	0,70	1,50	1,33	3,11	6,65	6,10	6,10	A++	A++
	12			3,50			2,15	3,50	3,80	0,30	1,20	1,80	1,33	5,32	7,99	6,10	6,10	A++	A++
	9	9		2,60	2,60		2,15	5,20	5,80	0,40	1,48	2,50	1,77	6,57	11,09	7,20	6,10	A++	A++
	9	12		2,23	2,97		2,15	5,20	5,80	0,50	1,48	2,50	2,22	6,57	11,09	7,20	6,50	A++	A++
	Internal Unit			Rated Capacity(KW)			Total Heating Capacity kW			Total Power Input(KW)			Total Current(A)230V			SCOP(W/W)		Energy Label	
	A	B	C	1 unità	2 unità	3 unità	Min.	Rated.	Max.	Min.	Rated.	Max.	Min.	Rated.	Max.	Feel+	Shine	Feel+	Shine
	9			2,80			2,05	2,80	3,02	0,40	0,80	1,80	1,77	3,55	7,99	4,0	4,0	A+	A+
	12			3,80			2,05	3,80	4,10	0,40	0,80	2,00	1,77	3,55	8,87	4,0	4,0	A+	A+
9	9		2,70	2,70		2,50	5,40	5,90	0,70	1,25	2,50	3,11	5,55	11,09	4,2	4,0	A+	A+	
9	12		2,31	3,09		2,50	5,40	5,90	0,70	1,25	2,50	3,11	5,55	11,09	4,2	4,0	A+	A+	

FMVD2422HE32	Internal Unit			Rated Capacity(KW)			Total Cooling Capacity kW			Total Power Input(KW)			Total Current(A)230V			SEER(W/W)		Energy Label	
	A	B	C	1 unità	2 unità	3 unità	Min.	Rated.	Max.	Min.	Rated.	Max.	Min.	Rated.	Max.	Feel+	Shine	Feel+	Shine
	9	9		2,55	2,55		2,20	5,10	5,60	0,40	1,20	2,60	1,77	5,32	11,54	6,10	6,10	A++	A++
	9	12		2,61	3,49		2,20	6,10	7,33	0,50	1,48	2,90	2,22	6,57	12,87	6,10	6,10	A++	A++
	12	12		3,05	3,05		2,20	6,10	7,33	0,60	1,48	2,90	2,66	6,57	12,87	6,10	6,10	A++	A++
	9	9	9	2,03	2,03	2,03	2,20	6,10	7,33	0,60	1,48	2,90	2,66	6,57	12,87	7,80	6,40	A++	A++
	Internal Unit			Rated Capacity(KW)			Total Heating Capacity kW			Total Power Input(KW)			Total Current(A)230V			SCOP(W/W)		Energy Label	
	A	B	C	1 unità	2 unità	3 unità	Min.	Rated.	Max.	Min.	Rated.	Max.	Min.	Rated.	Max.	Feel+	Shine	Feel+	Shine
	9	9		2,80	2,80		3,60	5,60	8,50	0,60	1,23	2,50	2,66	5,44	11,09	4,0	3,8	A+	A
	9	12		2,70	3,80		3,60	6,50	8,50	0,80	1,43	2,90	3,55	6,34	12,87	4,0	3,8	A+	A
12	12		3,25	3,25		3,60	6,50	8,50	0,80	1,43	2,90	3,55	6,34	12,87	4,0	3,8	A+	A	
9	9	9	2,17	2,17	2,17	3,60	6,50	8,50	0,80	1,43	2,90	3,55	6,34	12,87	4,3	3,8	A+	A	

FMVD2822HE32	Internal Unit			Rated Capacity(KW)			Total Cooling Capacity kW			Total Power Input(KW)			Total Current(A)230V			SEER(W/W)		Energy Label	
	A	B	C	1 unità	2 unità	3 unità	Min.	Rated.	Max.	Min.	Rated.	Max.	Min.	Rated.	Max.	Feel+	Shine	Feel+	Shine
	9	9		2,60	2,60		2,40	5,20	6,30	0,80	1,40	3,00	3,55	6,21	13,31	6,10	6,10	A++	A++
	9	12		2,60	3,50		2,40	6,10	7,30	1,00	1,65	3,20	4,44	7,30	14,20	6,10	6,10	A++	A++
	9	18		2,37	4,73		2,40	7,10	8,50	1,10	1,88	3,40	4,88	8,34	15,08	6,10	6,10	A++	A++
	12	12		3,55	3,55		2,40	7,10	8,50	1,10	1,88	3,40	4,88	8,34	15,08	6,10	6,10	A++	A++
	12	18		2,84	4,26		2,40	7,10	8,50	1,10	1,88	3,40	4,88	8,34	15,08	6,10	6,10	A++	A++
	9	9	9	2,37	2,37	2,37	2,40	7,10	8,50	1,10	1,88	3,40	4,88	8,34	15,08	7,10	6,10	A++	A++
	9	9	12	2,13	2,13	2,84	2,40	7,10	8,50	1,10	1,88	3,40	4,88	8,34	15,08	7,10	6,30	A++	A++
	Internal Unit			Rated Capacity(KW)			Total Heating Capacity kW			Total Power Input(KW)			Total Current(A)230V			SCOP(W/W)		Energy Label	
A	B	C	1 unità	2 unità	3 unità	Min.	Rated.	Max.	Min.	Rated.	Max.	Min.	Rated.	Max.	Feel+	Shine	Feel+	Shine	
9	9		2,60	2,60		3,60	5,20	8,80	0,60	1,67	2,40	2,66	7,42	10,65	4,0	3,8	A+	A	
9	12		2,60	3,80		3,60	6,40	8,80	0,60	1,95	2,60	2,66	8,66	11,54	4,0	3,8	A+	A	
9	18		2,80	5,60		3,60	8,40	8,80	0,80	2,23	3,00	3,55	9,89	13,31	4,0	3,8	A+	A	
12	12		4,25	4,25		3,60	8,50	8,80	0,80	2,23	3,00	3,55	9,89	13,31	4,0	3,8	A+	A	
12	18		3,40	5,10		3,60	8,50	8,80	0,80	2,23	3,00	3,55	9,89	13,31	4,0	3,8	A+	A	
9	9	9	2,83	2,83	2,83	3,60	8,50	8,80	0,80	2,23	3,00	3,55	9,89	13,31	4,3	3,8	A+	A	
9	9	12	2,55	2,55	3,40	3,60	8,50	8,80	0,80	2,23	3,00	3,55	9,89	13,31	4,3	3,8	A+	A	

## Efficiencies and Cooling and Heating Combinations

	Internal Unit				Rated Capacity(KW)				Total Cooling Capacity kW			Total Power Input(KW)			Total Current(A)230V			SEER(W/W)		Energy Label	
	A	B	C	D	1 unità	2 unità	3 unità	4 unità	Min.	Rated.	Max.	Min.	Rated.	Max.	Min.	Rated.	Max.	Feel+	Shine	Feel+	Shine
FMVTQ3422HE32	9	9			2,60	2,60			2,50	5,20	5,62	0,80	1,40	2,60	3,55	6,21	11,54	6,10	6,10	A++	A++
	9	12			2,60	3,50			2,50	6,10	6,59	0,80	1,60	2,80	3,55	7,10	12,42	6,10	6,10	A++	A++
	9	18			2,60	5,00			2,50	7,60	8,21	1,20	2,00	2,80	5,32	8,87	12,42	6,10	6,10	A++	A++
	12	12			3,50	3,50			2,50	7,00	7,56	1,20	1,80	2,80	5,32	7,99	12,42	6,10	6,10	A++	A++
	12	18			3,20	4,80			2,50	8,00	10,00	1,20	2,12	3,40	5,32	9,41	15,08	6,10	6,10	A++	A++
	18	18			4,00	4,00			2,50	8,00	10,00	1,20	2,12	3,60	5,32	9,41	15,97	6,10	6,10	A++	A++
	9	9	9		2,67	2,67	2,67		2,50	8,00	8,64	1,30	2,00	3,40	5,77	8,87	15,08	6,50	6,10	A++	A++
	9	9	12		2,40	2,40	3,20		2,50	8,00	10,00	1,30	2,12	3,60	5,77	9,41	15,97	6,50	6,10	A++	A++
	9	9	18		2,00	2,00	4,00		2,50	8,00	10,00	1,30	2,12	3,60	5,77	9,41	15,97	6,50	6,10	A++	A++
	9	12	12		2,18	2,91	2,91		2,50	8,00	10,00	1,30	2,12	3,60	5,77	9,41	15,97	6,50	6,10	A++	A++
	12	12	12		2,67	2,67	2,67		2,50	8,00	10,00	1,30	2,12	3,60	5,77	9,41	15,97	6,50	6,10	A++	A++
	9	9	9	9	2,00	2,00	2,00	2,00	2,50	8,00	10,00	1,30	2,12	3,60	5,77	9,41	15,97	7,20	6,10	A++	A++
	9	9	9	12	1,85	1,85	1,85	2,46	2,50	8,00	10,00	1,30	2,12	3,60	5,77	9,41	15,97	7,20	6,10	A++	A++

	Internal Unit				Rated Capacity(KW)				Total Heating Capacity kW			Total Power Input(KW)			Total Current(A)230V			SCOP(W/W)		Energy Label	
	A	B	C	D	1 unità	2 unità	3 unità	4 unità	Min.	Rated.	Max.	Min.	Rated.	Max.	Min.	Rated.	Max.	Feel+	Shine	Feel+	Shine
FMVTQ3422HE32	9	9			2,80	2,80			3,60	5,60	10,00	0,70	1,41	2,50	3,11	6,27	11,09	4,0	3,8	A+	A
	9	12			2,80	5,43			3,60	8,23	10,00	0,70	1,65	2,60	3,11	7,32	11,54	4,0	3,8	A+	A
	9	18			2,80	3,80			3,60	6,60	10,00	1,00	2,12	3,40	4,44	9,41	15,08	4,0	3,8	A+	A
	12	12			3,80	3,80			3,60	7,60	10,00	0,90	1,89	2,80	3,99	8,37	12,42	4,0	3,8	A+	A
	12	18			3,80	5,60			3,60	9,40	10,00	1,00	2,20	3,60	4,44	9,76	15,97	4,0	3,8	A+	A
	18	18			4,75	4,75			3,60	9,50	10,00	1,00	2,20	3,60	4,44	9,76	15,97	4,0	3,8	A+	A
	9	9	9		3,17	3,17	3,17		3,60	9,50	10,00	1,00	2,12	3,40	4,44	9,41	15,08	4,0	4,0	A+	A+
	9	9	12		2,85	2,85	3,80		3,60	9,50	10,00	1,00	2,20	3,60	4,44	9,76	15,97	4,0	4,0	A+	A+
	9	9	18		2,38	2,38	4,75		3,60	9,50	10,00	1,00	2,20	3,60	4,44	9,76	15,97	4,0	4,0	A+	A+
	9	12	12		2,59	3,45	3,45		3,60	9,50	10,00	1,00	2,20	3,60	4,44	9,76	15,97	4,0	4,0	A+	A+
	12	12	12		3,17	3,17	3,17		3,60	9,50	10,00	1,00	2,20	3,60	4,44	9,76	15,97	4,0	4,0	A+	A+
	9	9	9	9	2,38	2,38	2,38	2,38	3,60	9,50	10,00	1,00	2,20	3,60	4,44	9,76	15,97	4,2	4,0	A+	A+
	9	9	9	12	2,19	2,19	2,19	2,92	3,60	9,50	10,00	1,00	2,20	3,60	4,44	9,76	15,97	4,2	4,0	A+	A+

# Efficiencies and Cooling and Heating Combinations

	Internal Unit					Rated Capacity(KW)					Total Cooling Capacity kW			Total Power Input(KW)			Total Current(A)230V			SEER(W/W)		Energy Label	
	A	B	C	D	E	1 unità	2 unità	3 unità	4 unità	5 unità	Min.	Rated.	Max.	Min.	Rated.	Max.	Min.	Rated.	Max.	Feel+	Shine	Feel+	Shine
FMVQP4422HE32	9	12				2,60	3,50				2,40	6,10	6,59	2,60	3,45	4,00	11,54	15,31	17,75	6,10	6,10	A++	A++
	9	18				2,60	5,00				2,40	7,60	8,21	2,60	3,45	4,00	11,54	15,31	17,75	6,10	6,10	A++	A++
	9	24				2,60	7,20				2,40	9,80	10,58	2,60	3,45	4,00	11,54	15,31	17,75	6,10	6,10	A++	A++
	12	12				3,50	3,50				2,40	7,00	7,56	2,60	3,45	4,00	11,54	15,31	17,75	6,10	6,10	A++	A++
	12	18				3,50	5,00				2,40	8,50	9,18	2,60	3,45	4,00	11,54	15,31	17,75	6,10	6,10	A++	A++
	12	24				3,50	7,20				2,40	10,70	11,56	2,60	3,45	4,00	11,54	15,31	17,75	6,10	6,10	A++	A++
	18	18				5,00	5,00				2,40	10,00	10,80	2,60	3,45	4,00	11,54	15,31	17,75	6,10	6,10	A++	A++
	18	24				5,14	6,86				2,40	12,00	13,60	2,60	3,45	4,00	11,54	15,31	17,75	6,10	6,10	A++	A++
	24	24				6,00	6,00				2,40	12,00	13,60	2,60	3,45	4,00	11,54	15,31	17,75	6,10	6,10	A++	A++
	9	9	9			2,60	2,60	2,60			2,40	7,80	8,42	2,60	3,45	4,00	11,54	15,31	17,75	6,10	6,10	A++	A++
	9	9	12			2,60	2,60	3,50			2,40	8,70	9,40	2,60	3,45	4,00	11,54	15,31	17,75	6,10	6,10	A++	A++
	9	9	18			2,60	2,60	5,00			2,40	10,20	11,02	2,60	3,45	4,00	11,54	15,31	17,75	6,10	6,10	A++	A++
	9	9	24			2,57	2,57	6,86			2,40	12,00	13,60	2,60	3,45	4,00	11,54	15,31	17,75	6,10	6,10	A++	A++
	9	12	12			2,60	3,50	3,50			2,40	9,60	10,37	2,60	3,45	4,00	11,54	15,31	17,75	6,10	6,10	A++	A++
	9	12	18			2,60	3,50	5,00			2,40	11,10	11,99	2,60	3,45	4,00	11,54	15,31	17,75	6,10	6,10	A++	A++
	9	12	24			2,40	3,20	6,40			2,40	12,00	13,60	2,60	3,45	4,00	11,54	15,31	17,75	6,10	6,10	A++	A++
	9	18	18			2,40	4,80	4,80			2,40	12,00	13,60	2,60	3,45	4,00	11,54	15,31	17,75	6,10	6,10	A++	A++
	9	18	24			2,12	4,24	5,65			2,40	12,00	13,60	2,60	3,45	4,00	11,54	15,31	17,75	6,10	6,10	A++	A++
	12	12	12			3,50	3,50	3,50			2,40	10,50	11,34	2,60	3,45	4,00	11,54	15,31	17,75	6,10	6,10	A++	A++
	12	12	18			3,43	3,43	5,14			2,40	12,00	13,60	2,60	3,45	4,00	11,54	15,31	17,75	6,10	6,10	A++	A++
	12	12	24			3,00	3,00	6,00			2,40	12,00	13,60	2,60	3,45	4,00	11,54	15,31	17,75	6,10	6,10	A++	A++
	12	18	18			3,00	4,50	4,50			2,40	12,00	13,60	2,60	3,45	4,00	11,54	15,31	17,75	6,10	6,10	A++	A++
	9	9	9	9		2,60	2,60	2,60	2,60		2,40	10,40	11,23	2,60	3,45	4,00	11,54	15,31	17,75	6,10	6,10	A++	A++
	9	9	9	12		2,60	2,60	2,60	3,50		2,40	11,30	12,20	2,60	3,45	4,00	11,54	15,31	17,75	6,10	6,10	A++	A++
	9	9	9	18		2,40	2,40	2,40	4,80		2,40	12,00	13,60	2,60	3,45	4,00	11,54	15,31	17,75	6,10	6,10	A++	A++
	9	9	9	24		2,12	2,12	2,12	5,65		2,40	12,00	13,60	2,60	3,45	4,00	11,54	15,31	17,75	6,10	6,10	A++	A++
	9	9	12	12		2,57	2,57	3,43	3,43		2,40	12,00	13,60	2,60	3,45	4,00	11,54	15,31	17,75	6,10	6,10	A++	A++
	9	9	12	18		2,25	2,25	3,00	4,50		2,40	12,00	13,60	2,60	3,45	4,00	11,54	15,31	17,75	6,10	6,10	A++	A++
	9	12	12	12		2,40	3,20	3,20	3,20		2,40	12,00	13,60	2,60	3,45	4,00	11,54	15,31	17,75	6,10	6,10	A++	A++
	9	12	12	18		2,12	2,82	2,82	4,24		2,40	12,00	13,60	2,60	3,45	4,00	11,54	15,31	17,75	6,10	6,10	A++	A++
	12	12	12	12		3,00	3,00	3,00	3,00		2,40	12,00	13,60	2,60	3,45	4,00	11,54	15,31	17,75	6,10	6,10	A++	A++
	9	9	9	9	9	2,40	2,40	2,40	2,40	2,40	2,40	12,00	13,60	2,60	3,45	4,00	11,54	15,31	17,75	6,10	6,10	A++	A++
9	9	9	9	12	2,25	2,25	2,25	2,25	3,00	2,40	12,00	13,60	2,60	3,45	4,00	11,54	15,31	17,75	6,10	6,10	A++	A++	
9	9	9	12	12	2,12	2,12	2,12	2,82	2,82	2,40	12,00	13,60	2,60	3,45	4,00	11,54	15,31	17,75	6,10	6,10	A++	A++	



## Efficiencies and Cooling and Heating Combinations

	Internal Unit					Rated Capacity(KW)					Total Heating Capacity kW			Total Power Input(KW)			Total Current(A)230V			SCOP(W/W)		Energy Label	
	A	B	C	D	E	1 unità	2 unità	3 unità	4 unità	5 unità	Min.	Rated.	Max.	Min.	Rated.	Max.	Min.	Rated.	Max.	Feel+	Shine	Feel+	Shine
	FMVQP4422HE32	9	12				2,80	3,80				2,60	6,60	13,00	1,61	3,20	4,00	7,13	14,20	17,75	4,0	4,0	A
9		18				2,80	5,60				2,60	8,40	13,00	1,61	3,20	4,00	7,13	14,20	17,75	4,0	4,0	A	A
9		24				2,80	8,50				2,60	11,30	13,00	1,61	3,20	4,00	7,13	14,20	17,75	4,0	4,0	A	A
12		12				3,80	3,80				2,60	7,60	13,00	1,61	3,20	4,00	7,13	14,20	17,75	4,0	4,0	A	A
12		18				3,80	5,60				2,60	9,40	13,00	1,61	3,20	4,00	7,13	14,20	17,75	4,0	4,0	A	A
12		24				3,80	8,50				2,60	12,30	13,00	1,61	3,20	4,00	7,13	14,20	17,75	4,0	4,0	A	A
18		18				5,60	5,60				2,60	11,20	13,00	1,61	3,20	4,00	7,13	14,20	17,75	4,0	4,0	A	A
18		24				5,57	7,43				2,60	13,00	13,00	1,61	3,20	4,00	7,13	14,20	17,75	4,0	4,0	A	A
24		24				6,50	6,50				2,60	13,00	13,00	1,61	3,20	4,00	7,13	14,20	17,75	4,0	4,0	A	A
9		9	9			2,80	2,80	2,80			2,60	8,40	13,00	1,61	3,20	4,00	7,13	14,20	17,75	4,0	4,0	A	A
9		9	12			2,80	2,80	3,80			2,60	9,40	13,00	1,61	3,20	4,00	7,13	14,20	17,75	4,0	4,0	A	A
9		9	18			2,80	2,80	5,60			2,60	11,20	13,00	1,61	3,20	4,00	7,13	14,20	17,75	4,0	4,0	A	A
9		9	24			2,79	2,79	7,43			2,60	13,00	13,00	1,61	3,20	4,00	7,13	14,20	17,75	4,0	4,0	A	A
9		12	12			2,80	3,80	3,80			2,60	10,40	13,00	1,61	3,20	4,00	7,13	14,20	17,75	4,0	4,0	A	A
9		12	18			2,80	3,80	5,60			2,60	12,20	13,00	1,61	3,20	4,00	7,13	14,20	17,75	4,0	4,0	A	A
9		12	24			2,60	3,47	6,93			2,60	13,00	13,00	1,61	3,20	4,00	7,13	14,20	17,75	4,0	4,0	A	A
9		18	18			2,60	5,20	5,20			2,60	13,00	13,00	1,61	3,20	4,00	7,13	14,20	17,75	4,0	4,0	A	A
9		18	24			2,29	4,59	6,12			2,60	13,00	13,00	1,61	3,20	4,00	7,13	14,20	17,75	4,0	4,0	A	A
12		12	12			4,33	4,33	4,33			2,60	13,00	13,00	1,61	3,20	4,00	7,13	14,20	17,75	4,0	4,0	A	A
12		12	18			3,71	3,71	5,57			2,60	13,00	13,00	1,61	3,20	4,00	7,13	14,20	17,75	4,0	4,0	A	A
12		12	24			3,25	3,25	6,50			2,60	13,00	13,00	1,61	3,20	4,00	7,13	14,20	17,75	4,0	4,0	A	A
12		18	18			3,25	4,88	4,88			2,60	13,00	13,00	1,61	3,20	4,00	7,13	14,20	17,75	4,0	4,0	A	A
9		9	9	9		3,25	3,25	3,25	3,25		2,60	13,00	13,00	1,61	3,20	4,00	7,13	14,20	17,75	4,0	4,0	A	A
9		9	9	12		3,00	3,00	3,00	4,00		2,60	13,00	13,00	1,61	3,20	4,00	7,13	14,20	17,75	4,0	4,0	A	A
9		9	9	18		2,60	2,60	2,60	5,20		2,60	13,00	13,00	1,61	3,20	4,00	7,13	14,20	17,75	4,0	4,0	A	A
9		9	9	24		2,29	2,29	2,29	6,12		2,60	13,00	13,00	1,61	3,20	4,00	7,13	14,20	17,75	4,0	4,0	A	A
9		9	12	12		2,79	2,79	3,71	3,71		2,60	13,00	13,00	1,61	3,20	4,00	7,13	14,20	17,75	4,0	4,0	A	A
9		9	12	18		2,44	2,44	3,25	4,88		2,60	13,00	13,00	1,61	3,20	4,00	7,13	14,20	17,75	4,0	4,0	A	A
9		12	12	12		2,60	3,47	3,47	3,47		2,60	13,00	13,00	1,61	3,20	4,00	7,13	14,20	17,75	4,0	4,0	A	A
9		12	12	18		2,29	3,06	3,06	4,59		2,60	13,00	13,00	1,61	3,20	4,00	7,13	14,20	17,75	4,0	4,0	A	A
12		12	12	12		3,25	3,25	3,25	3,25		2,60	13,00	13,00	1,61	3,20	4,00	7,13	14,20	17,75	4,0	4,0	A	A
9		9	9	9	9	2,60	2,60	2,60	2,60	2,60	2,60	13,00	13,00	1,61	3,20	4,00	7,13	14,20	17,75	4,0	4,0	A	A
9	9	9	9	12	2,44	2,44	2,44	2,44	3,25	2,60	13,00	13,00	1,61	3,20	4,00	7,13	14,20	17,75	4,0	4,0	A	A	
9	9	9	12	12	2,29	2,29	2,29	3,06	3,06	2,60	13,00	13,00	1,61	3,20	4,00	7,13	14,20	17,75	4,0	4,0	A	A	